



STRENGTHENING SUCCESS

CAPABILITIES BROCHURE

TABLE OF CONTENTS

STRENGTHENING SUCCESS _____	3	METAL ROOF & WALL PANELS _____	22
BUILDING SOLUTIONS _____	4	BUILDING ROOF & WALL _____	24
Customized Buildings _____	5	Standing Seam Roofing _____	24
Building Kits _____	5	Concealed Fastener System _____	25
CUSTOMIZED BUILDINGS _____	6	Exposed Fastener System _____	26
Heavy Rigid-Frame Buildings _____	6	BUILDING ACCESSORIES _____	28
Simplisteel™ Rigid-Frame Buildings _____	7	Roll-Up Doors _____	28
Hypersteel Cold-Formed Buildings _____	8	Vents _____	28
Pole Barns _____	9	Windows _____	28
COMPARING BUILDING SOLUTIONS _____	10	Insulation _____	29
BUILDING KITS _____	13	Walk Doors _____	29
Engineered Kits _____	13	RESIDENTIAL ROOF & WALL _____	31
Non-Engineered Kits _____	13	Concealed Fastener System _____	31
PRE-ENGINEERED BUILDING KITS _____	14	Exposed Fastener System _____	32
NON-ENGINEERED BUILDING KITS _____	16	JOBSITE COIL & TRIM _____	35
Backyard Building Kits _____	16	Custom Coil _____	35
Greenhouse Kits _____	17	Flat Sheets _____	35
Loafing Sheds _____	18	SELF STORAGE _____	36
Carports _____	19	PAINT SYSTEMS & WARRANTIES _____	37
HOMESTEAD BARNDOMINIUMS _____	20		

STRENGTHENING SUCCESS

Mueller is your go-to partner in construction, whether you're a DIY enthusiast or planning to bring in the pros. Our project experts are not only great at helping you plan and budget, but also experts in getting you the right components for your metal roof and walls. Our locations leverage an expansive plant network and major purchasing power to deliver solutions for customers with Speed & Ease™.

Whether you're searching for an entire metal building or specific components, we've got you covered. We'll even provide pre-cut and pre-drilled materials, ready for on-site assembly. Our commitment to your convenience means we offer top-notch buildings and high-quality components that offer lasting performance when properly designed and installed.

Our versatile solutions cater to various industries, including agriculture, aviation, equestrian, commercial, manufacturing, warehouses, workshops and self-storage. We're here to make construction easy for everyone!



Personal Service

The Mueller team works directly with you from selection through delivery to help ensure your project is a success.



Online Tools

Easy-to-use tools are available to help you design and quote your dream building, in addition to videos, manuals and step-by-step project guides.



In-House Manufacturing

Our extensive manufacturing network services customers with complete buildings, metal roof and trim components, roll-up doors and more!



Quality & Value

Designed and manufactured for durability and affordability.



BUILDING SOLUTIONS

Access a wide range of high-quality building options to fit your goals and project. Our buildings are expertly manufactured to meet your requirements and deliver real value. Additionally, you can select from a variety of colors and panel profiles for a unique aesthetic. Call or visit your local store location to learn more about all your options.





CUSTOMIZED BUILDINGS:

- Heavy rigid-frame buildings
- Simplisteel™ rigid-frame buildings
- Hypersteel™ cold-formed buildings
- Pole barns

BUILDING KITS:

- Simplisteel™ kits
- Hypersteel™ kits
- Homestead barndominiums
- Backyard buildings
- Greenhouses
- Loafing sheds
- Carports



CUSTOMIZED BUILDINGS

HEAVY RIGID-FRAME BUILDINGS

Customized heavy rigid-frame buildings offer endless design options with high complexity engineering to achieve your ideal space. Whether you need a manufacturing facility or sports arena, you will find a wide range of options, including building size, roof type, colors and accessories. You will also receive maximum efficiency, quality and value since we handle both engineering and manufacturing. We'll work with you throughout the entire process, from initial design to delivery of your building.

Heavy rigid-frame buildings are ideal for projects with:

- Interior crane systems
- Large door systems, such as hangar doors
- Buildings over 100' width
- Complex designs with mezzanines, parapets, and open walls
- Multiple interconnected buildings



CUSTOMIZED BUILDINGS



Simplisteel™ buildings take the strength of a solid frame and bring it to simple structures, creating sturdy buildings that you can easily customize. When it comes to simple metal buildings, Simplisteel™ buildings are tough and last a long time. This means there's less work needed to get a reliable space to protect the things you care about most.

Simplisteel™ buildings are for those with big dreams and practical goals. They're the metal building solution that makes passion projects a reality. Affordable, strong and versatile, Simplisteel™ products are perfect for all kinds of personal and business uses, whether starting a business, setting up a workshop or creating a repair shed and much more.



CUSTOMIZED BUILDINGS

HYPERSTEEL™
COLD-FORMED BUILDINGS

Hypersteel™ buildings prioritize efficiency, utilizing a quick, cold-formed manufacturing process that takes your project from design to delivery in a few weeks. By bending rather than welding the metal, we create a lightweight, robust structure with impressive longevity. Steel's exceptional strength, durability and versatility make it resistant to pests, fire, wind, rain and snow.

Its flexibility allows easy adaptation to specific project requirements, contributing to a more sustainable construction industry through recyclability. Engineering specifications can be tailored to meet your individual project needs.

Hypersteel™ buildings are engineered for durability, easy design, ordering and installation, meeting strength and structural performance criteria when properly designed and installed.



CUSTOMIZED BUILDINGS

POLE BARNS

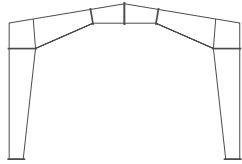
Experience the perfect fusion of organic warmth and industrial strength in our pole barns (also called post-frame buildings). The robust frame with truss-design rafters provides lasting strength with an inviting aesthetic, adding a touch of classic charm to your space.

Elevate both structure and style with the incorporation of metal roofing, walls and trim. Choose from a diverse palette of colors and personalize your post-frame building with features like wainscots, lean-tos and more.



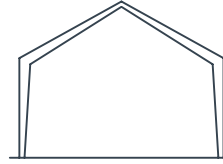
COMPARING BUILDING SOLUTIONS

The chart below provides a streamlined comparison of the innovative building options available through Mueller stores to help you make the best choice for your construction project.



Heavy Rigid-Frame Buildings

Endless design options for high complexity structures.

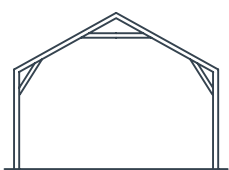


SIMPLISTEEL™ RIGID-FRAME BUILDINGS

The advantages of rigid-frame metal building without added complexity.

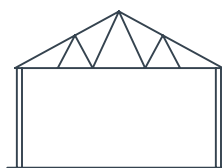
Max Length*	Up to approx. 600'	Up to approx. 500'
Max Width*	Up to approx. 200'	Up to approx. 100'
Max Height*	Up to approx. 60'	Up to approx. 26'
Production Time	Typically 12-16 weeks	Typically 7-9 weeks (Confirmed upon Sales Order Acknowledgment)
Foundation	Pier, slab, or footing by others	Pier, slab, or footing by others
Primary Framing	Built up steel framing members	Built up steel framing members (Alternate options available for endwall framing)
Secondary Framing	Cold-formed steel girts, purlins and eave struts	Cold-formed steel girts, purlins and eave struts
Roof Geometry	Multiple geometries (Roof pitch = min. 1/2:12, max 6:12)	Multiple geometries (Roof pitch = min. 1/2:12, max. 4:12)
Mezzanine	Yes	No
Installation Equipment	Medium to heavy (Based on design)	Medium to heavy (Based on design)
Features	Asymmetrical designs, cranes, lean-tos, insulated metal panels, liner panels, overhangs, canopies, partitions, walk doors, roll-up doors, windows and other framed openings.	Insulation, liner panels, overhangs, canopies, wainscot, partitions, walk doors, roll-up doors, windows and other framed openings.

*Depending on codes, loads and structural design. Seller's contractual terms, conditions, and disclaimers apply.



HYPERSTEEL™
COLD-FORMED BUILDINGS

Benefit from the advantages of metal, while saving time and effort.



Pole Barn (Post Frame)

The economical solution for storage and protection.

Max Length*	Almost any length	Up to approx. 100'
Max Width*	Up to approx. 70'	Up to approx. 50'
Max Height*	24'	16'
Production Time	In Just A few weeks (Confirmed upon Sales Order Acknowledgment)	Typically 2-3 weeks (Confirmed upon Sales Order Acknowledgment)
Foundation	Pier, slab, or footing by others	Primarily post hole footing & concrete by others (Alternate options available; please inquire)
Primary Framing	Cold-formed steel framing members	Treated Wood Columns with Parallel Chord Metal Trusses (Standard) (Alternate options, including wood trusses, available in select markets; please inquire)
Secondary Framing	Cold-formed steel girts, purlins and eave struts	2x6 and 2x4 wood girts and purlins (Standard) (Alternate options, including metal Zee, Cee, Eave Strut, and Open Face Channel, available in select markets; please inquire)
Roof Geometry	Multiple geometries (Roof pitch = min. 1:12, max. 5:12)	Multiple geometries (Roof pitch = 4:12 standard; 1:12 to 6:12 available with extended lead times)
Mezzanine	Yes	No
Installation Equipment	Light (Based on design)	Light (Based on design)
Features	Foundation design, express engineering (excludes custom), lean to (sidewall and endwall), wainscot, overhangs, liner panels, walk doors, roll-up doors, and other framed openings.	Porches, multiple attached buildings, roof only options, insulation, liner panels, overhangs, walk doors, roll up doors, windows and other framed openings.

*Depending on codes, loads and structural design. Seller's contractual terms, conditions, and disclaimers apply.



BUILDING KITS

Whether you need additional space for vehicles, storage for lawn equipment, a barn for horses or a hobby area, we offer many types of buildings kits to meet your needs.

Metal building components are resistant to fire, hail and include paint warranties up to 45 years for added peace of mind. Your local Mueller team can help evaluate your needs and recommend the best building kit for an economic solution with proven durability.

*NOTE: Please check your local building codes before ordering non-engineered building kits.

ENGINEERED KITS:

- Simplisteel™ kits
- Hypersteel™ kits

NON-ENGINEERED KITS:*

- Backyard buildings
- Greenhouses
- Loafing sheds
- Carports



PRE-ENGINEERED BUILDING KITS

Our pre-engineered building kits are available in two different systems to fit a range of applications and job site conditions. Check our website for applicable building codes.

Each Kit Includes:

- Bolt-together frame
- 26-gauge galvalume roof with 40-year limited warranty
- 26-gauge colored walls with up to 45-year limited paint finish warranty (Bright White, Saddle Tan, Light Stone, Ash Gray)
- Basic trim package
- Anchor bolt plans and erection drawings

Optional Items:

- Roll-up doors
- Walk doors
- Insulation
- Gutters
- Ridge vents
- Windows
- Additional colors



SIMPLISTEEL™ RIGID-FRAME BUILDINGS

Our Simplisteel kits are built with heavy-duty rigid-frames and cold-formed end walls for assembly with bolts and screws - no welding required.

Available Sizes:

- 24' x 24' x 10' - one 10' x 7' 4" framed opening*
- 24' x 30' x 11' - one 16' x 8' framed opening
- 30' x 40' x 12' - one 10' x 10' framed opening
- 30' x 50' x 12' - one 12' x 10' framed opening
- 40' x 50' x 14' - one 12' x 12' framed opening
- 40' x 60' x 16' - two 14' x 14' framed openings

*No rigid interior frame lines required for this size.



HYPERSTEEL™ COLD-FORMED BUILDINGS

Our Hypersteel kits are built with light weight cold-formed frames for easier handling and assembly on the job site, often without the need for specialized tools or heavy equipment.

Available Sizes:

- 24' x 24' x 10' - one 10' x 7' 4" framed opening
- 24' x 30' x 10' - one 16' x 8' framed opening
- 30' x 40' x 12' - one 10' x 10' framed opening
- 30' x 50' x 12' - one 12' x 10' framed opening
- 40' x 50' x 14' - one 12' x 12' framed opening
- 40' x 60' x 16' - two 14' x 14' framed openings



NON-ENGINEERED KITS

BACKYARD BUILDING KITS

Functional & Affordable.

These kits have been a favorite of our customers because of their exceptional functionality and affordability. Assemble with bolts and screws – no welding. Optional floor kits are also available.

Available Sizes:

- 6' x 9' x 7'
- 9' x 12' x 7'
- 12' x 15' x 7'
- 12' x 21' x 8'
- 18' x 21' x 8'
- 24' x 24' x 8'

Features:

- 26-gauge color roof & walls
- Up to 45-year limited paint finish warranty
- Bolt-together frame
- Trim package
- Steel door (based on building size)



NON-ENGINEERED KITS

GREENHOUSE KITS

A Great Way to Nurture Nature.

Our greenhouse kits feature a strong, galvanized steel frame that can be easily bolted together. The polycarbonate panels are extremely strong and let plenty of light in to help your plants and flowers grow. The greenhouse door is even lockable for extra security.

Available Sizes:

- 6' x 9' x 7'
- 9' x 12' x 7'
- 12' x 15' x 7'
- 12' x 18' x 7'
- 12' x 21' x 7'

Features:

- Bolt-together design
- Galvanized steel frame
- Lockable walk door with sliding windows
- Additional sliding window included with each kit
- Durable polycarbonate panels
- UV and hail resilient materials



NON-ENGINEERED KITS

LOAFING SHEDS

Protection for Your Animals Year-Round.

When your animals and livestock are important to you, it's vital to give them cover from the elements. The Mueller Loafing Shed provides shelter in hot or cold weather, season after season.

Available Sizes:

- 12' x 12'
- 12' x 24'

Features:

- 26-gauge roof & wall sheets
- Bolt-together design
- Durable steel frame



NON-ENGINEERED KITS

CARPORTS

A Reliable Way to Protect Your Ride.

Why expose your car or truck to hail, heat and storms? Mueller Carport Kits provide a practical way to keep them protected. They're affordable, easy to assemble and available in one or two-car sizes.

Available Sizes:

- 12' x 20' single car
- 20' x 20' double car
- 24' x 24' double car

Features:

- 26-gauge white roof sheets
- Square tubing and purlin frame (optional galvanized frame available)
- Optional trim kit and ability to upgrade carport height



HOMESTEAD BARNDOMINIUMS

Buildings Designed for Living.

Our Homestead barndominiums make beautiful living spaces. Strong, engineered steel exteriors provide flexibility for you to complete the interior while supporting large spans and open floor plans. Available in three base models and a variety of color combinations, the Mueller Homestead barndominiums provide a versatile and functional place to call home. Customize your Homestead base model to match your requirements.

Available in Three Base Models:

1200 Model

- 30' x 40' x 12' main building
- 10' x 40' front and back porch

1800 Model

- 30' x 60' x 12' main building
- 10' x 60' front and back porch

2400 Model

- 40' x 60' x 12' main building
- 10' x 60' front and back porch

Barndominiums Include:

- 4/12 pitch main building roof
- 2:12 pitch porch overhangs
- 24" overhangs with soffits (soffits not included on porches)
- Bolt-together galvanized steel frame
- 26 gauge white roof panels; 26 gauge color wall panels
- Up to 45-year limited paint finish warranty
- Framed openings for exterior walk doors (doors not included)
- Framed openings for windows (windows not included)
- Engineered cold-formed construction, IBC 2018 with 120 MPH wind, 10 LB. snow
- Construction package drawings and engineered stamped drawings





1800 Model



2400 Model

METAL ROOF & WALL PANELS

Chose from a wide selection of profiles and colors to make your building uniquely your own. The strength of steel offers lasting durability with multiple benefits:



Curb Appeal:

Panels are available in a variety of aesthetics, from traditional corrugated waves to sleek concealed fastener profiles. Combine with your color selection to make a design statement.



Durability:

Install a roof or wall that typically lasts longer than asphalt or wooden shingles.



Weather Resilience:

Proven resistance to wind, hail and fire for added peace of mind.



Energy Efficiency:

Recycled content and solar reflective coatings contribute to a sustainable choice for your building.



Low Maintenance:

Just a few simple steps will prolong your metal panel system for years to come.





BUILDING ROOF & WALL

Complete product details are available online in the data sheet for each panel profile.

R Roof **U** Underhung

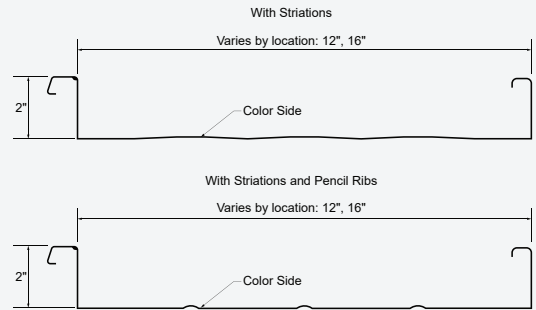
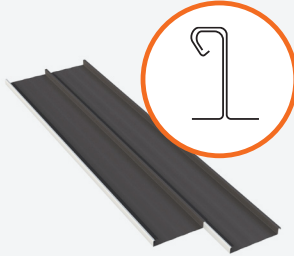
W Wall **S** Soffit

STANDING SEAM ROOFING

R **BattenLok® HS**
Mech-Seam*

Min. roof slope 1/2:12

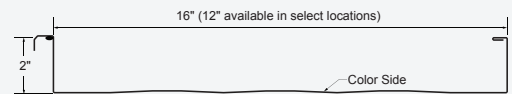
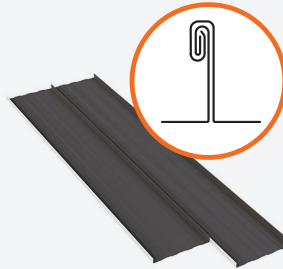
Mechanically field-seamed. High-strength structural panel installs over purlins or bar joists with a clip system.



R **MLK Panel**
SuperLok®

Min. roof slope 1/2:12

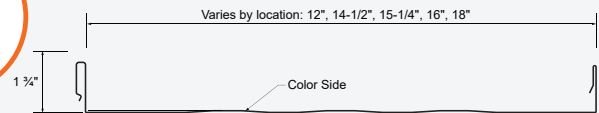
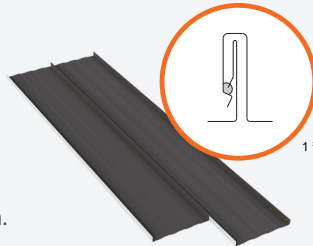
Mechanically field-seamed. High-strength structural panel installs over open framing or a solid substructure with a clip system.



R **MSL Panel**
LokSeam®/Secure-Seam®/SL175*

Min. roof slope 3:12

Snap-together panel installs over open framing or a solid substructure with a clip system.



R **Double-Lok™**
MTL Panel, TS-324**

Min. roof slope 1/4:12

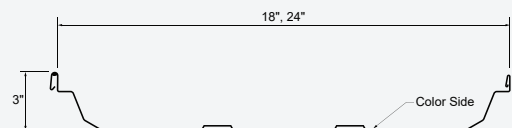
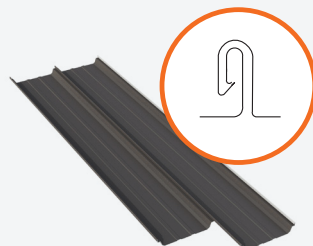
Mechanically field-seamed, trapezoidal leg panel installs over open framing with a clip system.



R **Ultra-Dek®**

Min. roof slope 1/4:12

Snap-together, trapezoidal leg panel installs over open framing with a clip system.



*Produced on-site at select locations with alternate name(s) shown.

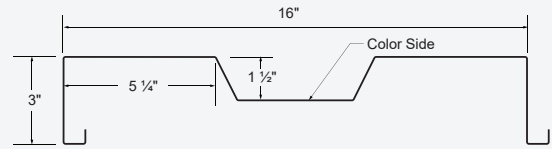
R Roof **U** Underhung

W Wall **S** Soffit

CONCEALED FASTENER SYSTEM

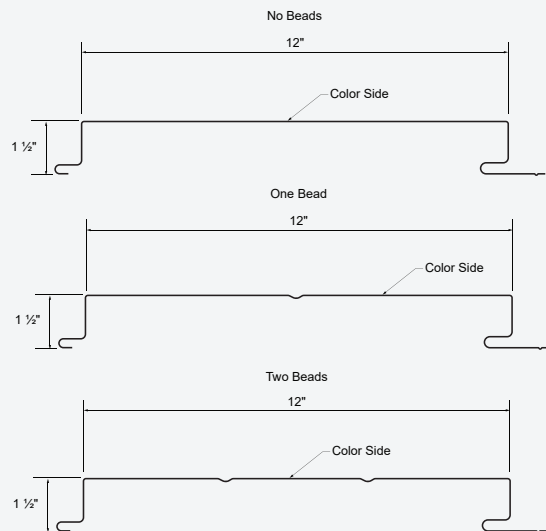
W **ShadowRib™**

Fluted face creates distinctive shadow lines on wall applications. Installs over open framing.



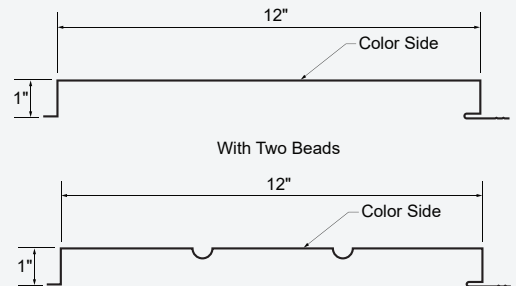
W **FW-120**
FWQ100

U Installs over open framing.
S Create interesting lines and accents on wall applications. Optional installation with clips.



U **Artisan®**
Soffit

S Installs over open framing. Ideal for accenting both interior walls and soffits.



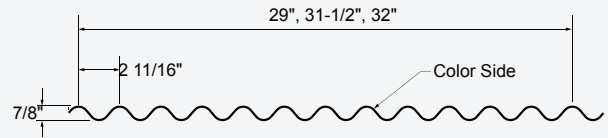
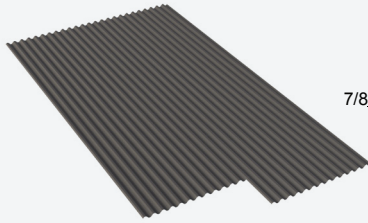
*Produced on-site at select locations with alternate name(s) shown.

EXPOSED FASTENER SYSTEM

- R** **CPB**
- W** *PBC/Corrugated**

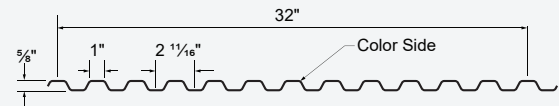
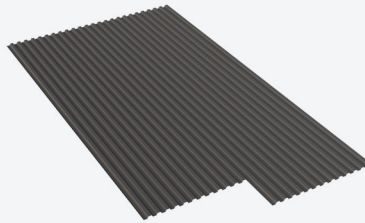
Min. roof slope 3:12

Timeless corrugated look; installs over open framing or a solid substructure.



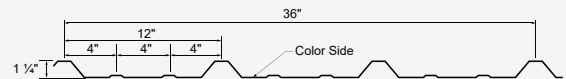
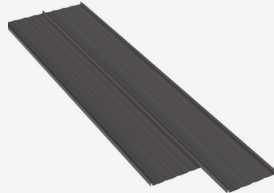
- R** **PBD**
- W** Min. roof slope 3:12

Distinct profile for both roofs and walls. Installs over open framing or a solid substructure.



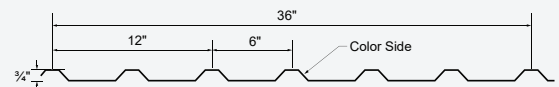
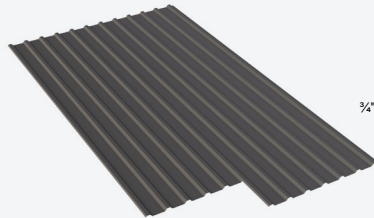
- R** **PBR**
- W** Min. roof slope 1/2:12

Popular structural panel installs over open framing or a solid substructure. Also available as R-panel without purlin bearing leg.



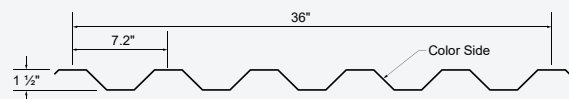
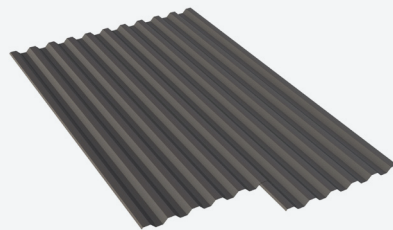
- R** **PBU**
- W** Min. roof slope 1:12

Versatile profile installs over open framing or a solid substructure. Also available as U-panel without purlin bearing leg.



- R** **7.2 Panel**
- W** Min. roof slope 1/2:12

Versatile symmetrical look installs over open framing or a solid substructure.



*Produced on-site at select locations with alternate name(s) shown.

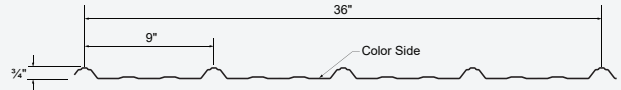
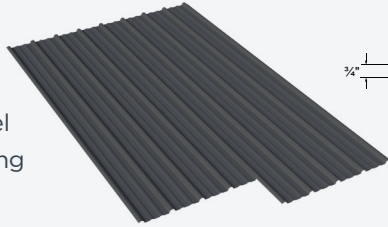
EXPOSED FASTENER SYSTEM

R **SSP Panel**

*MasterRib***

W Min. roof slope 3:12

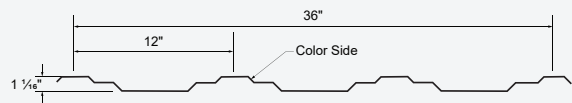
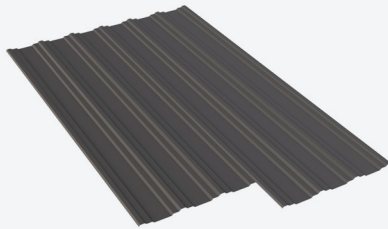
Trusted residential panel installs over open framing or a solid substructure.



R **Retro-R®**

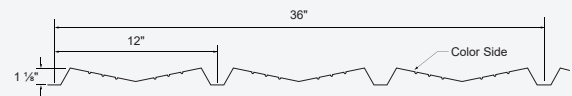
Min. roof slope 1/2:12

W Apply directly over an existing PBR or R-panel roof to give your building new life.



W **AVP Panel**

Pencil ribs with angled surfaces provide visual interest for wall applications. Installs over open framing or solid substructure.



*Produced on-site at select locations with alternate name(s) shown.



BUILDING ACCESSORIES

ROLL-UP DOORS **MADE IN HOUSE**

Everything you want in a metal roll-up door, durable construction and long-lasting performance, you'll find with Mueller roll-up doors. Select from a wide range of sizes and designer colors to complement your building. Mounting hardware is also included.

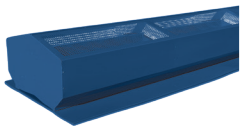
Accessories available:

- Electric roll-up door opener
- Electric operator kit
- Radio control kit

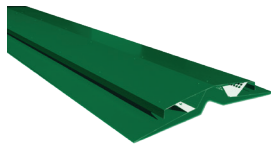
WIND CERTIFIED ROLL-UP DOORS **MADE IN HOUSE**

If you live in an area with high winds, you should consider a wind-certified Mueller roll-up door. At our in-house testing facility, these doors were proven to withstand winds up to 120 mph. Our test generated a force of 37 pounds per square foot, which is equivalent to 120 mph wind.

VENTS **MADE IN HOUSE**



Commercial Ridge Vent



Low Profile Ridge Vent



Fixed Wall Louver

WINDOWS

- Horizontal sliding window
- Fixed accent window



BUILDING ACCESSORIES

INSULATION

Mueller locations can supply multiple insulation options, ranging from stock material to fully custom packages, to meet your insulation needs.



WALK DOORS

Walk doors can use standard, premium, heavy-duty lever locksets or panic hardware. Weatherstrip kits are recommended to give you a tighter fit and reduced air leakage and dust. You can order complete door kits, which include the door, frame kit and standard lockset. Doors are 20-gauge steel with a polystyrene core, and frames are 16-gauge steel. A slide bolt is included on the 6' x 7' door unit.



- | | |
|-------------------|-------------------------|
| 1. Ridge Cap | 7. Corner Trim |
| 2. Corner Box | 8. Downspout |
| 3. Rake Trim | 9. Downspout Kickout |
| 4. Door Head Trim | 10. Gutter or Eave Trim |
| 5. Roll-Up Door | 11. Walk Door |
| 6. Jamb Trim | 12. Window |





RESIDENTIAL ROOF & WALL

Complete product details are available online in the data sheet for each panel profile.

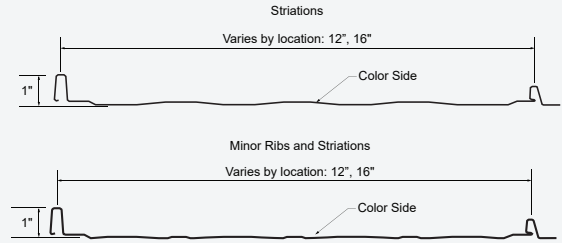
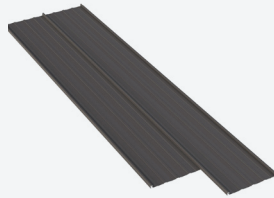
R Roof **U** Underhung

W Wall **S** Soffit

CONCEALED FASTENER SYSTEM

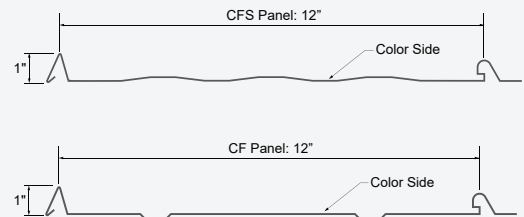
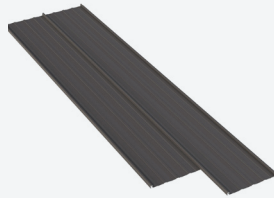
R **Slimline®**
Perma-Lok*
Min. roof slope 3:12

Snap-together panel with a low profile installs over a solid substructure.



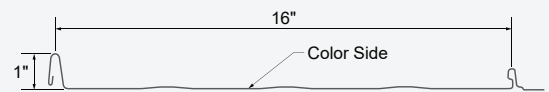
R **CFS & CF Panels**
Min. roof slope 3:12

Snap-together panel with a low profile installs over a solid substructure.



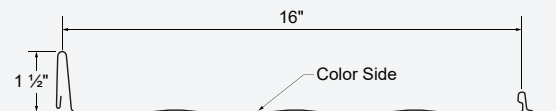
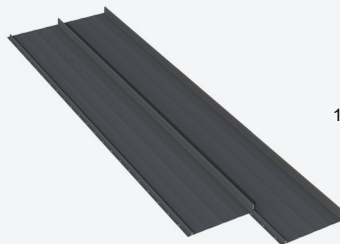
R **CWP Panel**
Min. roof slope 3:12

Snap-together panel with a low profile installs over a solid substructure. Ideal for complex roofs with multiple gables, valleys and transitions.



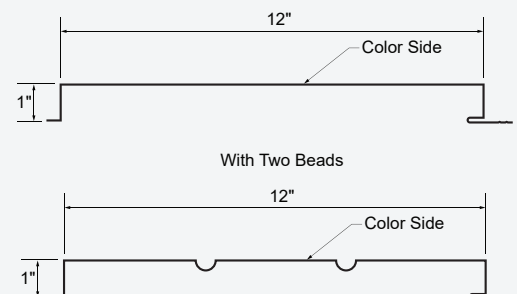
R **CWH Panel**
Min. roof slope 3:12

Snap-together panel with a high profile installs over a solid substructure. Ideal for long, straight panel runs.



U **Artisan®**
Soffit

S Installs over open framing. Ideal for accenting both interior walls and soffits.



*Produced on-site at select locations with alternate name(s) shown.

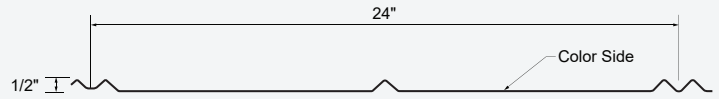
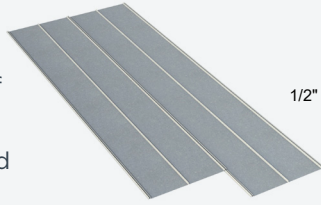
EXPOSED FASTENER SYSTEM

R

5V Panel

Min. roof slope 3:12

Classic residential roof system installs over open framing or a solid substructure.

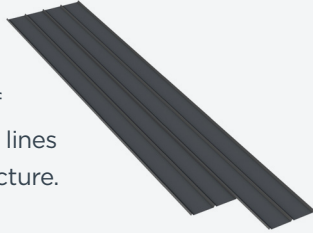


R

AP Panel

Min. roof slope 3:12

Classic residential roof system with simplified lines installs a solid substructure.

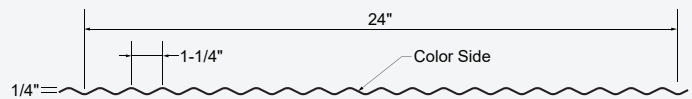
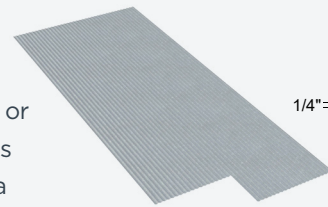


*Available at select locations.

W

1-1/4" Corrugated

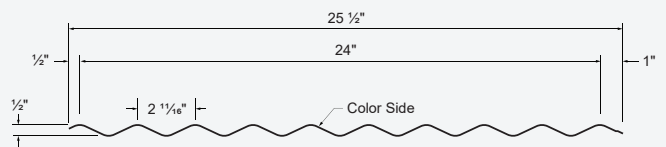
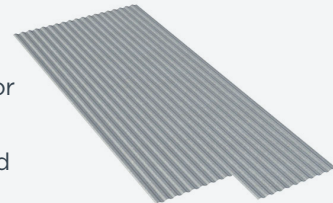
Traditional agricultural panel for light projects or interior accents. Installs over open framing or a solid substructure.



W

2-1/2" Corrugated

Agricultural panel for light projects or interior accents. Installs over open framing or a solid substructure.



R

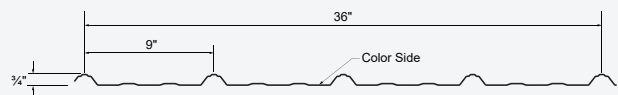
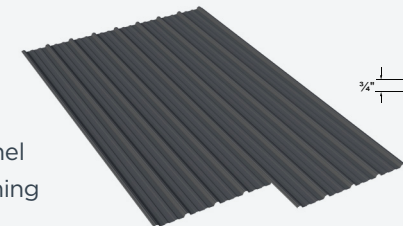
SSP Panel

*MasterRib***

W

Min. roof slope 3:12

Trusted residential panel installs over open framing or a solid substructure.



*Produced on-site at select locations with alternate name(s) shown.





JOBSITE COIL & TRIM

Mueller locations stock a wide range of gauges, widths and paint finishes for your custom coil and flat sheet requirements. This vast inventory selection of premier metal products, coupled with personalized service, is the foundation of our brand promise for over 90 years.

CUSTOM COIL

- Vast selection of designer colors and gauges
- Custom coil widths and lengths (minimum of 500 linear feet)
- Custom trim and matching colors
- Supporting products (fasteners, underlayment, clips & closures)
- Quick turnaround time
- Convenient locations for easy pickup
- Job site delivery (for a fee)



FLAT SHEETS*

- Available in full width up to 21 feet
- 26-gauge in 43" width
- 24-Gauge in 48" Width
- 22-gauge in 43" width (Galvalume® Plus, Bright White & Weathered Steel only)

*Flat sheet widths vary by location. Contact your local store for details.



Coil and Flat Sheet Packaging

- Coils are packaged with rain cap, ID and OD protector
- Flats are packaged with strippable plastic and can be rolled or palletized (additional pallet charge).



SELF STORAGE

Self-storage businesses choose the Mueller brand. From climate-controlled facilities to boat and RV storage, select from a wide range of solutions. Your local sales representative can help design and order the units to your exact specifications with warranties that help ensure years of reliability and peace of mind. Units feature pre-cut, pre-marked steel frames and durable steel panels.

- Designed in-house
- In-house manufacturing and quality control
- Pre-cut, pre-marked, easy-to-assemble steel frame
- Custom trim designs
- Roll-up doors made in-house
- Designer colors for panels, trim and roll-up doors
- Variety of accessories & components
- On-site delivery



PAINT SYSTEMS & WARRANTIES

CHOOSE THE HUE THAT'S RIGHT FOR YOU.

Our premium metal roofing and steel building panels offer incredible versatility, durability and beauty, making them a great solution for both residential and commercial applications. With bold profiles and many colors to choose from, you can get the look you desire while achieving outstanding structural performance.

Visit muellerinc.com for color availability by panel profile.

Our Signature® Paint Systems Offer Several Key Benefits:

Beauty

The specially formulated paints offer long-term color retention, even after years of weathering.

Energy Efficiency

Special pigments with solar reflective properties help reduce the heating and cooling load on your building. Signature® 200 and 300 colors are Cool Roof compliant through the CRRC-1 Program.

Limited Paint Warranties up to 45 Years

Signature® paint systems are backed by robust warranties for added peace of mind that your buildings will look vibrant for decades.







MADE

— WITH —

MUELLER



Scan to find your nearest store.

Can't make it to a local store? Our National Sales Center has you covered with nationwide delivery right to your door.



MUELLERINC.COM

877-2-MUELLER (877-268-3553) | SALES@MUELLERINC.COM

© 2026 Mueller, part of Cornerstone Building Brands, Inc. ALL RIGHTS RESERVED. 2608259991101/RevA/MS/0426